

The MSZ-LN range is a wall mounted system that blends energy efficiency with a sophisticated streamlined design. Finished with a range of deep, rich colours and a premium quality feel, this range utilises low GWP R32 refrigerant.

#### Key Features

- New stylish design, available in Ruby Red, Onyx Black, Pearl White and Natural White colours
- Highly energy efficient operation, utilising low GWP R32 refrigerant
- i-see Sensor provides customised comfort by automatically monitoring room occupancy, position and body temperatures
- Built in Wi-Fi interface enabling control and monitoring via the MELCloud app
- Double vanes operate independently to distribute airflow evenly throughout the room
- Plasma Quad Plus filter uses powerful plasma technology to filter out even microscopic particles
- Dual-Barrier Coating to the heat exchanger, fan and air duct prevents dust and grease accumulation
- Quiet operation with industry leading low noise levels
- Weekly timer
- Replace Technology available



# Air Conditioning

## Product Information

### MSZ-LN Inverter Heat Pump Wall Mounted System

Making a  
World of  
Difference



Ruby Red (R)



Pearl White (V)



Onyx Black (B)



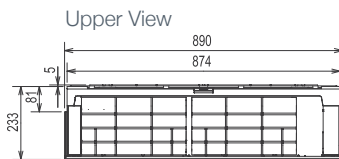
Natural White (W)



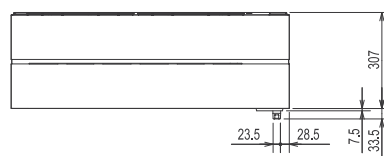
MSZ-LN - INDOOR UNITS		MSZ-LN25VG R/B/V/W	MSZ-LN35VG R/B/V/W	MSZ-LN50VG R/B/V/W	MSZ-LN60VG R/B/V/W
CAPACITY (kW)	Heating (nominal)	3.2 (0.8 - 5.4)	4.0 (1.0 - 6.3)	6.0 (1.0 - 8.2)	6.8 (1.8 - 9.3)
	Cooling (nominal)	2.5 (1.0 - 3.5)	3.5 (0.8 - 4.0)	5.0 (1.0 - 6.0)	6.1 (1.4 - 6.9)
	Heating (UK)	2.64 (0.66 - 4.45)	3.3 (0.83 - 5.2)	4.94 (0.82 - 6.75)	5.6 (1.48 - 7.66)
	Cooling (UK)	2.48 (0.99 - 3.47)	3.47 (0.79 - 3.96)	4.95 (0.99 - 5.94)	6.05 (1.38 - 6.84)
SHF (nominal)		0.97	0.90	0.77	0.75
COP / EER (nominal)		5.52 / 5.15	5.00 / 4.27	4.05 / 3.62	3.76 / 3.41
SCOP / SEER (BS EN14825)		5.2 / 10.5	5.1 / 9.5	4.6 / 8.5	4.6 / 7.5
ErP ENERGY EFFICIENCY CLASS	Heating/Cooling	A+++ / A+++		A++ / A+++	
AIRFLOW (l/s)	Heating (SLo-Lo-Mid-Hi-SHi)	67-95-118-142-240	71-97-118-142-228	90-107-142-178-262	110-158-192-227-262
	Cooling (SLo-Lo-Mid-Hi-SHi)	71-97-118-147-198	71-97-118-147-213	95-127-148-177-232	118-147-177-212-262
PIPE SIZE MM (in)	Gas	9.52 (3/8")	9.52 (3/8")	9.52 (3/8")	12.7 (1/2")
	Liquid	6.35 (1/4")	6.35 (1/4")	6.35 (1/4")	6.35 (1/4")
SOUND PRESSURE LEVEL (dBA)	Heating (SLo-Lo-Mid-Hi-SHi)	19-24-29-36-45	19-24-29-36-45	25-29-34-39-47	29-37-41-45-49
	Cooling (SLo-Lo-Mid-Hi-SHi)	19-23-29-36-42	19-24-29-36-43	27-31-35-39-46	29-37-41-45-49
SOUND POWER LEVEL (dBA)		58	58	60	65
DIMENSIONS (mm)	Width x Depth x Height	890 x 233 x 307	890 x 233 x 307	890 x 233 x 307	890 x 233 x 307
WEIGHT (kg)		15.5	15.5	15.5	15.5
ELECTRICAL SUPPLY		Fed by Outdoor Unit		Fed by Outdoor Unit	
FUSE RATING (BS88) - HRC (A)		6	6	6	6
INTERCONNECTING CABLE No. CORES		4	4	4	4

MUZ-LN - OUTDOOR UNITS		MUZ-LN25VG	MUZ-LN35VG	MUZ-LN50VG	MUZ-LN60VG
SOUND PRESSURE LEVEL (dBA)	Heating/Cooling	49 / 46	50 / 49	54 / 51	55 / 55
	Cooling	60	61	64	65
WEIGHT (kg)		35	35	40	55
DIMENSIONS (mm)	Width x Depth x Height	800 x 285 x 550	800 x 285 x 550	800 x 285 x 714	840 x 330 x 880
ELECTRICAL SUPPLY		220-240v, 50Hz		220-240v, 50Hz	
PHASE		Single		Single	
SYSTEM POWER INPUT (kW)	Heating/Cooling (nominal)	0.580 / 0.485	0.800 / 0.820	1.480 / 1.380	1.810 / 1.790
	Heating/Cooling (UK)	0.523 / 0.406	0.722 / 0.686	1.335 / 1.151	1.632 / 1.494
STARTING CURRENT (A)		3.0	4.0	6.8	7.9
SYSTEM RUNNING CURRENT (A)	Heating/Cooling [MAX]	3.0 / 2.5 [7.1]	4.0 / 3.9 [9.9]	6.8 / 6.3 [13.9]	7.9 / 7.9 [15.2]
FUSE RATING (BS88) - HRC (A)		10	10	16	16
MAINS CABLE No. CORES		3	3	3	3
MAX PIPE LENGTH (m)		20	20	20	30
MAX HEIGHT DIFFERENCE (m)		12	12	12	15
CHARGE (kg) / CO <sub>2</sub> EQUIVALENT (t) - R32 (GWP 675) - 7m		1.0 / 0.68	1.0 / 0.68	1.25 / 0.85	1.45 / 0.98
MAX ADDED QUANTITY (kg) / CO <sub>2</sub> EQUIVALENT (t) - R32 (GWP 675)		0.26 / 0.18	0.26 / 0.18	0.26 / 0.18	0.46 / 0.32

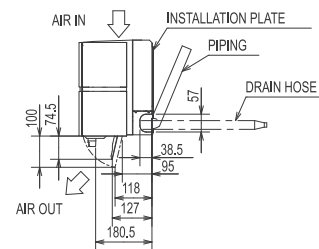
#### PRODUCT DIMENSIONS



Front View



Side View



Telephone: 01707 282880

email: [air.conditioning@meuk.mee.com](mailto:air.conditioning@meuk.mee.com)

web: [airconditioning.mitsubishielectric.co.uk](http://airconditioning.mitsubishielectric.co.uk) microsite: [timeforR32.co.uk](http://timeforR32.co.uk)

UNITED KINGDOM Mitsubishi Electric Europe Living Environment Systems Division  
Travellers Lane, Hatfield, Hertfordshire, AL10 8XB, England General Enquiries Telephone: 01707 282880 Fax: 01707 278881

IRELAND Mitsubishi Electric Europe Westgate Business Park, Ballymount, Dublin 24, Ireland  
Telephone: Dublin (01) 419 8800 Fax: Dublin (01) 419 8890 International code: (003531)

Country of origin: United Kingdom - Japan - Thailand - Malaysia. ©Mitsubishi Electric Europe 2017. Mitsubishi and Mitsubishi Electric are trademarks of Mitsubishi Electric Europe B.V. The company reserves the right to make any variation in technical specification to the equipment described, or to withdraw or replace products without prior notification or public announcement. Mitsubishi Electric is constantly developing and improving its products. All descriptions, illustrations, drawings and specifications in this publication present only general particulars and shall not form part of any contract. All goods are supplied subject to the Company's General Conditions of Sale, a copy of which is available on request. Third-party product and brand names may be trademarks or registered trademarks of their respective owners.

Note: The fuse rating is for guidance only. Please refer to the relevant databook for detailed specification. It is the responsibility of a qualified electrician/electrical engineer to select the correct cable size and fuse rating based on current regulation and site specific conditions. Mitsubishi Electric's air conditioning equipment and heat pump systems contain a fluorinated greenhouse gas, R410A(GWP:2088), R32(GWP:675), R407C (GWP:1774) or R134a (GWP:1430). These GWP values are based on Regulation(EU) No 517/2014 from IPCC 4th edition. In case of Regulation(EU) No.626/2011 from IPCC 3rd edition, these are as follows. R410A(GWP:1975), R32(GWP: 550), R407C (GWP:1650) or R134a (GWP:1300).



[www.greengateway.mitsubishielectric.co.uk](http://www.greengateway.mitsubishielectric.co.uk)

Mitsubishi Electric UK's commitment to the environment

Follow us @meuk\_Jes  
Follow us @green\_gateway

Mitsubishi Electric  
Living Environmental Systems UK

[mitsubishielectric2](https://www.youtube.com/mitsubishielectric2)

Effective as of February 2017

