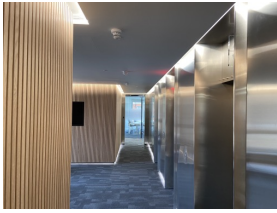


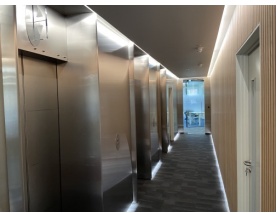
GEC Anderson Stainless Steel Elevate London Lobby Spaces



Brushed satin stainless steel opposing nature wall



Bushed satin stainless steel



Stainless steel cladding to lift lobby areas



Brushed satin stainless steel opposing nature wall

Room Type: Circulation spaces: Corridors:
Specifier: Fortebis
Contractor: Sykes & Son Limited

Lift lobbies in a central London office building were part of a total office refurbishment project on multiple levels. GEC Anderson's stainless steel cladding contrasts effectively with the neutral wooden boarding to the opposing walls. The lighting, combined with the floor and ceiling finishes, complete the carefully and meticulously designed circulation spaces to provide a high quality, creative yet totally professional result.

GEC Anderson were responsible for measuring, production, delivery and installation of the stainless steel elements that were supplied in phases to suit the stringent works program of main contractor, Sykes & Son Ltd. In advance of this, a significant amount of consultation and liaison with the design team was required to ensure that the detailing would be precisely as anticipated and required.

GEC Anderson brushed satin stainless steel was used throughout but each and every section of the cladding was purpose made to provide an exact fit to the irregular walls as well as to allow for varying ceiling and floor levels. Managing Director, Martin Tye, comments "Getting the measurements correct was absolutely key to the finished results. It was quite a challenge, given the timescale and the fact that it was such a busy site where multiple trades were required to work in the same areas but the overall results were very pleasing." He continues "Time and time again we see that the end result can appear so simple but achieving it can be rather complicated!"

GEC Anderson, who are known mainly for their bespoke stainless steel kitchen worktops, also supply stainless steel cabinets, shelving, spahsbacks, panels and doors. Since their founding in 1962, much has happened in the world of stainless steel but there is a constant that lies at the core of it's offering – the honest beauty and practicality of the unique material of stainless steel. It seems to be timeless.