



UVc GERMICIDAL  
ULTRAVIOLET  
CHAMBER

# UPM/EC

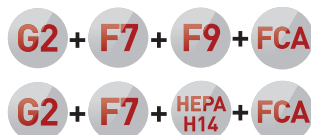
MOBILE AIR PURIFYING UNITS



- PLUG & PLAY SYSTEM WITH AUTOMATIC CONTROL
- IDEAL FOR THE HOSPITALITY AND OTHER INDUSTRIES
- UVc GERMICIDAL CHAMBER
- LOW-POWER, E.C. MOTOR TECHNOLOGY
- 4 STAGES OF FILTRATION
- 25 MM THICK ACOUSTIC CASE



STAGES OF  
FILTRATION



# UPM/EC

The UPM / EC air purifying units have been designed for mobility, purifying and cleaning air and eliminating odours, **in areas of high occupancy where low noise and versatility are important.**



## ENERGY SAVING

The air inlet aperture has been designed to aid laminar air flow which, together with a dynamic pressure balancing chamber, helps to optimise efficiency.

The E.C. motor's high-performance technology is a key element in reducing electrical consumption.



## LOW SOUND LEVEL

The 25mm thick noise reducing outer panels use bespoke, high quality insulating materials and make this ideal equipment for installation in areas where a low noise level is required.



## DURABILITY

The outer panels of these units are made of pre-finished sheet metal with 40mm aluminium structural frames to maximise the life of the equipment.



## EASE OF INSTALLATION AND MAINTENANCE

The access door allows quick access to clean the impeller and replace filters.





## CONFIGURABLE FILTRATION STAGES

In addition to the odour eliminating activated carbon filter, the equipment has two intake pre-filters and one discharge filter, with a range of configurations, all giving the equipment an excellent filtration performance.



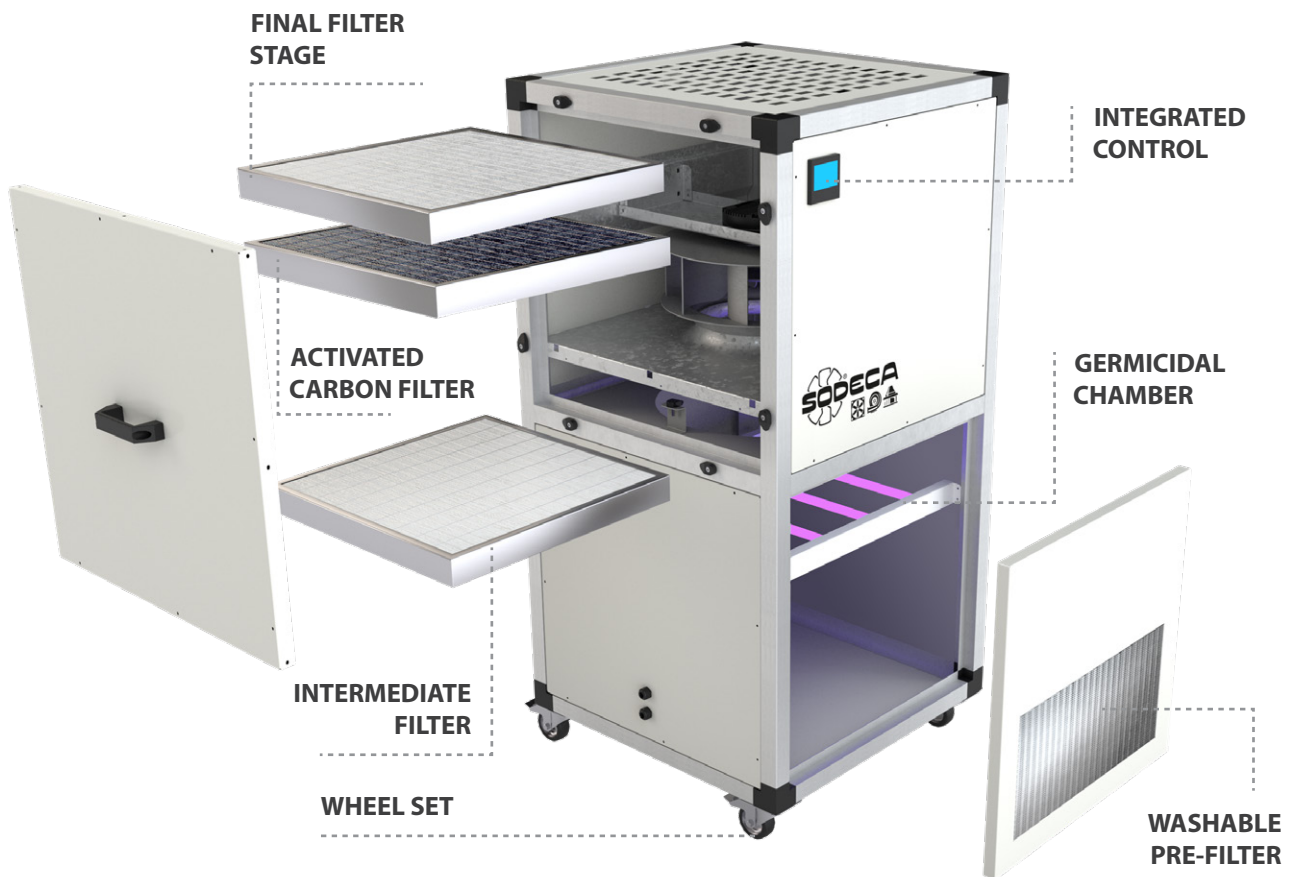
## INTEGRATED CONTROL SYSTEM

- ON / OFF fan
- Adjustable flow 65% - 100%
- ON/OFF germicidal chamber
- Time control
- Control and alarm of dirty filters
- Automatic operation



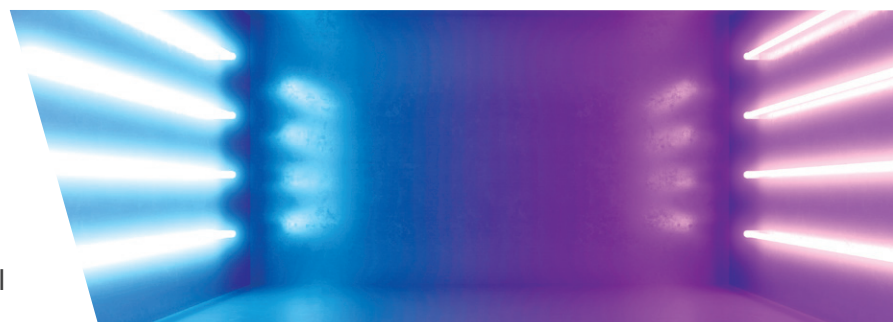
## WASHABLE PRE-FILTER

The first pre-filter catches small, lint type particles, together with larger particles and is dishwasher safe.



## GERMICIDAL CHAMBER

Depending on model, these purification units can be supplied with an integrated germicidal chamber, using UV ultraviolet lamps "C" range.



# UPM/EC

Mobile air purifying units, designed for cleaning and purifying indoor air and eliminating odours in any type of room.



#### Characteristics:

- Frame made from 40mm profile aluminium.
- Set of wheels.
- Plug & Play system with integrated control.
- Control and dirty filters alarm.
- Outer panels made of 25 mm thick, high quality acoustic insulation, and pre-finished sheet metal.
- Backward curved impeller.
- Dishwasher safe pre-filter.
- Filtration stages, depending on model:
  - F7 + F9
  - F7 + HEPA H14
- Activated carbon filter for odour removal.
- Inspection cover for maintenance and filter replacement.
- Germicidal chamber with UVc (256 nm), depending on model.

#### Motor:

- High efficiency E.C. technology, external rotor motor, controllable by 0-10V signal.
- Single phase 200-240V- 50 / 60Hz and three phase 380-480V- 50 / 60Hz.
- Air temperature range of -25°C to +60°C.

#### Finish:

- Aluminum profile frame and pre-finished sheet metal with 25mm thick acoustically insulated panels.

#### Order code

<b>UPM/EC</b>	<b>-</b>	<b>310</b>	<b>-</b>	<b>F7+F9</b>	<b>-</b>	<b>CG</b>
↓		↓		↓		↓
Mobile air purifying units		Impeller diameter in mm		Filter F7 + F9 Filter F7 + HEPA H14		UVc germicidal chamber

#### Filter characteristics

Filters	EN 779 Em	EN 1822	ISO 16890			
			ISO ePM <sub>1</sub>	ISO ePM <sub>2,5</sub>	ISO ePM <sub>10</sub>	ISO COARCE
G4	90%	-	-	-	-	>90%
F7	90%	-	>50%	>65-95%	>85%	-
F9	95%	-	>80%	>95%	>95%	-
HEPA H14	-	>99,995%	-	-	-	-

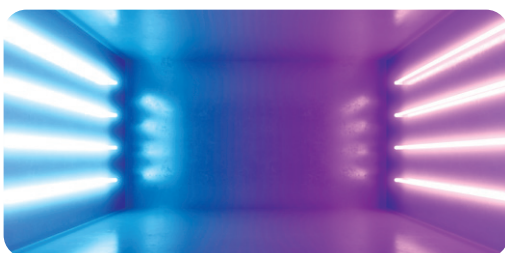
#### Technical characteristics

Model	Recommended effective working area <sup>1</sup> (m <sup>2</sup> )		Speed (r/min)	Power (W)	Power supply	Sound pressure level at 50% of max speed <sup>2</sup> (dB(A))	Maximum flow rate (m <sup>3</sup> /h)		Weight (kg)
	Filters (F7+F9)	Filters (F7+H14)					Filters (F7+F9)	Filters (F7+H14)	
UPM/EC-310	140	50	1920	175	200-240V 50/60Hz 1Ph	29	1450	510	55
UPM/EC-400	220	130	1550	460	200-240V 50/60Hz 1Ph	38	2200	1300	97
UPM/EC-500	300	325	1250	1150	380-480V 50/60Hz 3Ph	36	2990	3250	165

<sup>1</sup> Recommended effective working area with a 3-meter-high premises. <sup>2</sup> Radiated sound pressure level in dB (A) at 1.5 m distance at maximum flow.

#### Technical characteristics of the UVc germicidal chamber

Depending on model, these purification units can be supplied with an integral germicidal chamber, using UV ultraviolet lamps "C" in a spectrum of 256 nm, indicated wave amplitude, to inactivate a wide variety of microorganisms by absorbing short wavelength energy through DNA and RNA. For specific types of viruses or bacteria that are affected by the radiation dose in the germicidal chamber, consult the specific document.



Model	Number of lamps	Total electrical power (W)	Total UVc radiation power (W)	Radiation dose* (mJ/cm <sup>2</sup> )
UPM/EC-310	6	66	16,8	5,9
UPM/EC-400	4	100	28	5,6
UPM/EC-500	6	150	42	4,5

\*Minimum dose calculated based on flow with F7+H14 filters.



## Erp. (Energy Related Products)

Information on Directive 2009/125 / EC downloadable from the SODECA website or QuickFan selection program.

### Acoustic parameters

Sound power spectrum L<sub>w</sub> (A) in dB (A) per frequency band in Hz.  
Values are at maximum speed and average flow.

Model	63	125	250	500	1000	2000	4000	8000
UPM/EC-310	30	44	33	32	44	25	24	19
UPM/EC-400	37	52	41	42	34	29	27	27
UPM/EC-500	30	42	45	50	50	50	47	41

### Dimensions mm



Model	A (mm)	B (mm)	H (mm)
UPM/EC-310	542	500	960
UPM/EC-400	742	700	1210
UPM/EC-500	942	900	1550

\*Data subject to change without prior notice.